



# MIPOLAM ELEGANCE

[gerflor.com](http://gerflor.com)

FLOORING, ESD & SHOWER SYSTEM



**Gerflor**<sup>®</sup>  
theflooringgroup

# evercare™ SURFACE TREATMENT

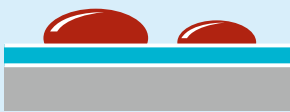
EXCLUSIVE PATENTED TECHNOLOGY BY GERFLOR

## THE BEST CHEMICAL STAIN RESISTANCE SURFACE TREATMENT

evercare™ BY GERFLOR: Treatment durability



Gerflor:  
Even thickness



100% non-porous surface  
Water-repellent effect

Other treated floor covering



Competitor:  
Missing treatment  
and uneven  
thickness



Non-treated product

## SIMPLE & EASY STAIN REMOVAL



## USER'S BENEFITS

Easy & cost-effective maintenance

Stain barrier

No wax for life

Chemical resistance



Mipolam Elegance

# MIPOLAM ELEGANCE

## Performances and benefits



Homogeneous vinyl flooring suitable for heavy duty traffic areas



Non-directional design available in 33 references



Available in 2 m sheet (also available in tiles 608 x 608 mm on demand)



Excellent abrasion resistance



Matt finish surface: enhanced design & colour, long lasting appearance



Highly flexible homogeneous flooring, easy to install & weld

Don't forget our complementary ranges!



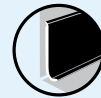
Handrails



Wall Coverings & Protections



Entrance mats



Skirtings & Profiles

## MIPOLAM ELEGANCE EL5



### CONDUCTIVE FLOORING

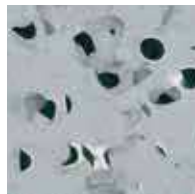
Conductive flexible homogeneous vinyl floorcovering with carbon encapsulated granules available in sheet. Its **conductive backing** ensures optimal and consistent conductive properties.

It acts as a continuous conductive  $10^4 \leq R_t \leq 10^6$  and has permanent antistatic properties (< 100 V).

Mipolam Elegance EL5 is treated with **Evercare™**.



0350 Light Grey



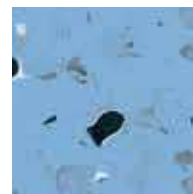
0352 Grey



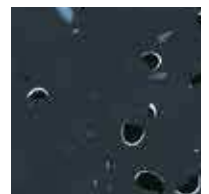
0353 Beige



0355 Green



0354 Blue



0351 Black

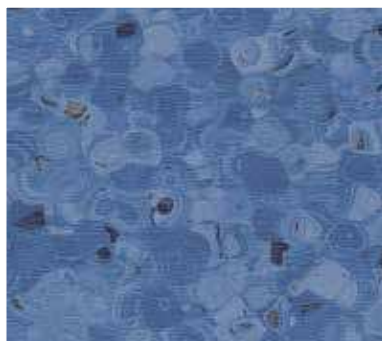


For further details, see our ESD Solutions documentation on [www.gerflor.com](http://www.gerflor.com)



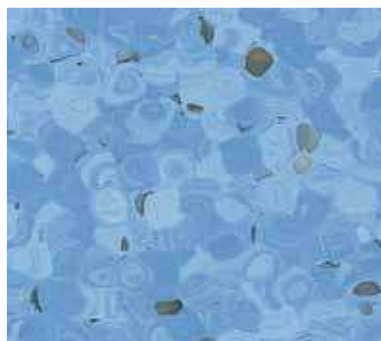
Mipolam Elegance EL5

# MIPOLAM ELEGANCE



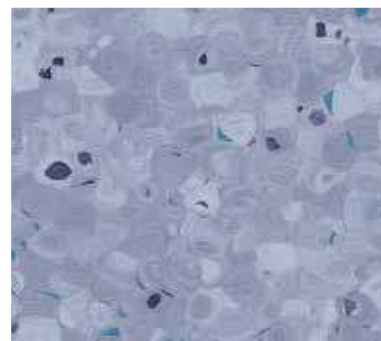
**0349 Bluecrop**

NCS: 4030-R80B / LRV: 17.8



**0348 Bluetta**

NCS: 2040-R90B / LRV: 34.0



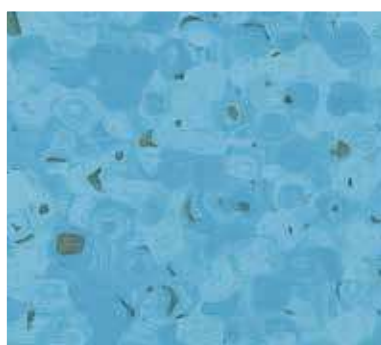
**0319 Quetsche**

NCS: 3020-R80B / LRV: 31.0



**0342 Blueberry**

NCS: 2050-B / LRV: 25.8



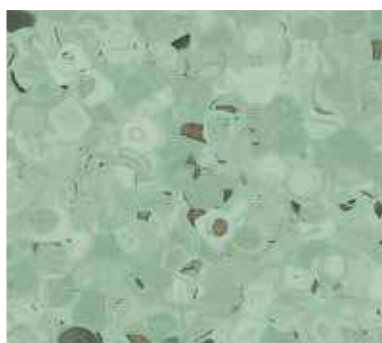
**0341 Bilberry**

NCS: 2040-B10G / LRV: 34.8



**0340 Jambolan**

NCS: 1030-B30G / LRV: 45.6



**0339 Apple**

NCS: 2020-G10Y / LRV: 40.6



**0338 Kiwi**

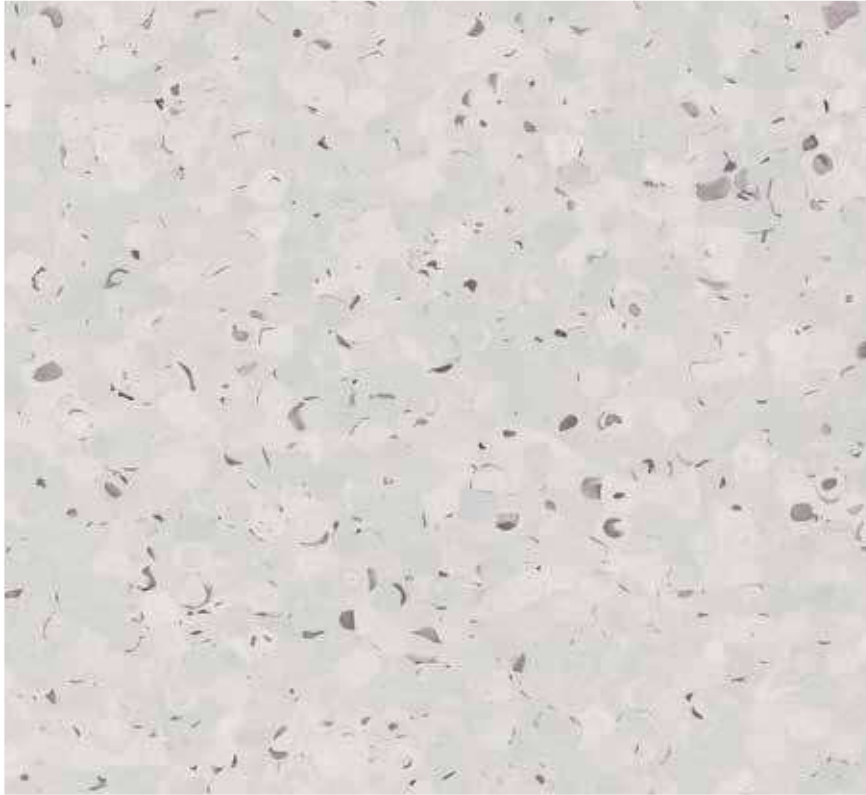
NCS: 1040-G50Y / LRV: 47.9



**0703 Lime**

NCS: 1030-G90Y / LRV: 58.5





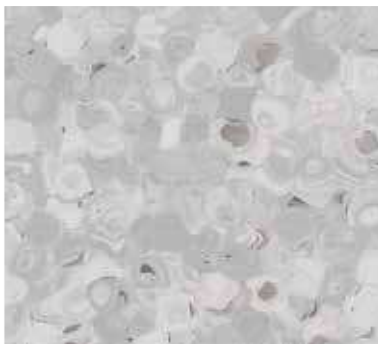
**0696 Ginger**  
NCS: 1502-B / LRV: 59.7



**0347 Mangoustan**  
NCS: 1005-Y60R / LRV: 67.9



**0705 Patisson**  
NCS: 1502-Y / LRV: 64.4



**0343 Pecan**  
NCS: 2500-N / LRV: 46.9



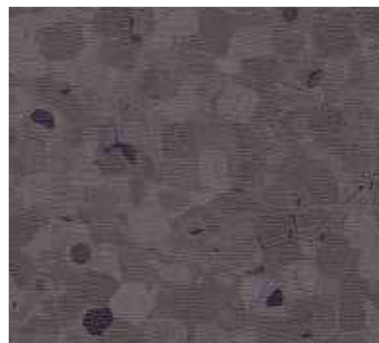
**0318 Grape**  
NCS: 2005-R80B / LRV: 51.4



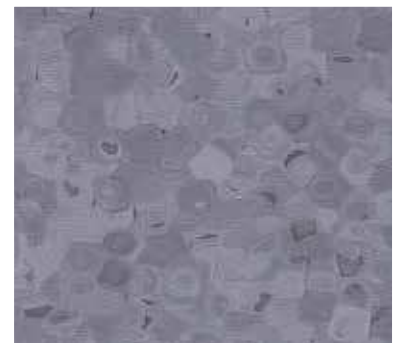
**0697 Greenstone**  
NCS: 3005-R80B / LRV: 37.1



**0321 Olive**  
NCS: 8502-B / LRV: 6.9

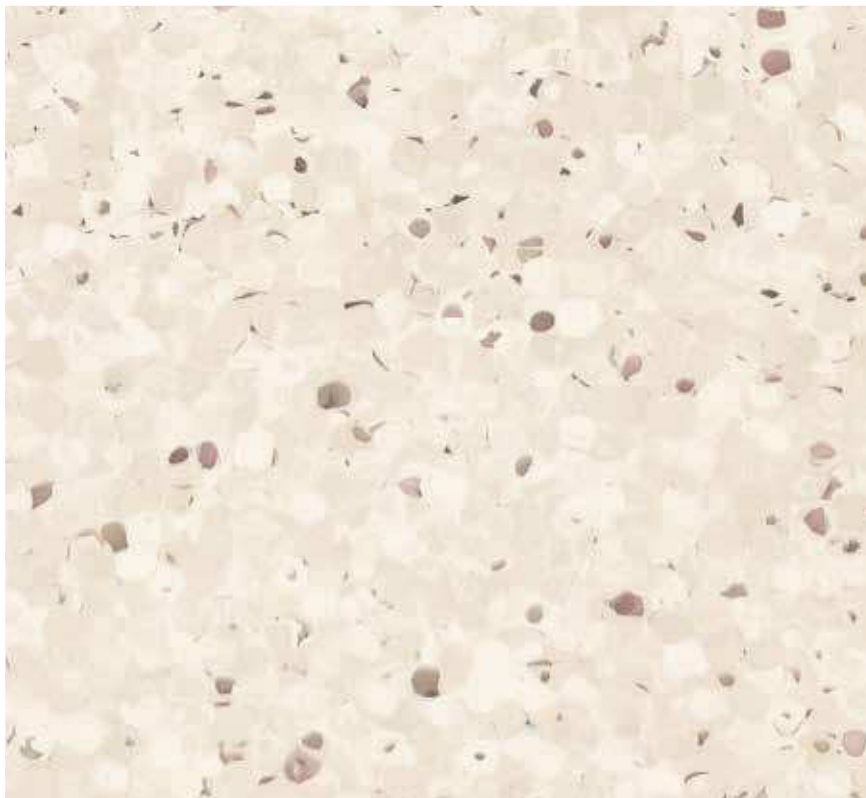


**0344 Nutmeg**  
NCS: 7000-N / LRV: 11.8



**0704 Raspberry Grey**  
NCS: 5005-R80B / LRV: 20.3

# MIPOLAM ELEGANCE



**0322 Jicama**  
NCS: 1505-Y20R / LRV: 67.8



**0328 Almond**  
NCS: 1505-Y30R / LRV: 61.0



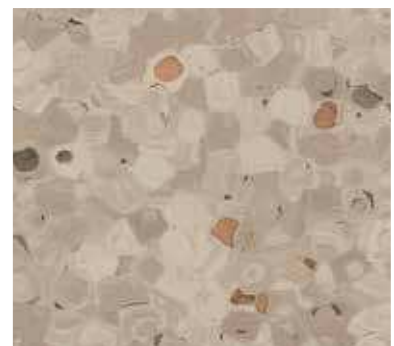
**0323 Nut**  
NCS: 2005-Y20R / LRV: 50.6



**0698 Cacao**  
NCS: 6010-Y30R / LRV: 17.7



**0329 Hazelnut**  
NCS: 3010-Y40R / LRV: 36.4



**0324 Chestnut**  
NCS: 3005-Y20R / LRV: 37.2





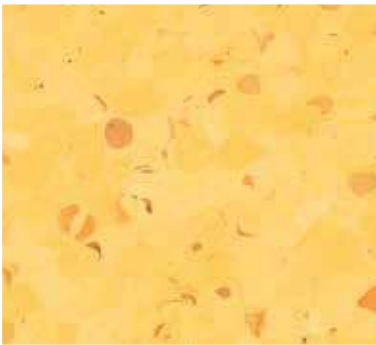
**0336 Acerola**  
NCS: 2570-Y80R / LRV: 12.6



**0702 Kumquat**  
NCS: 3060-Y60R / LRV: 19.8



**0700 Melon**  
NCS: 1040-Y30R / LRV: 48.2



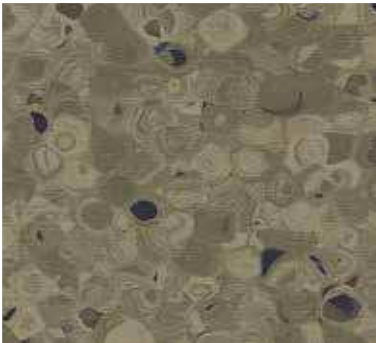
**0333 Ananas**  
NCS: 0550-Y10R / LRV: 57.9



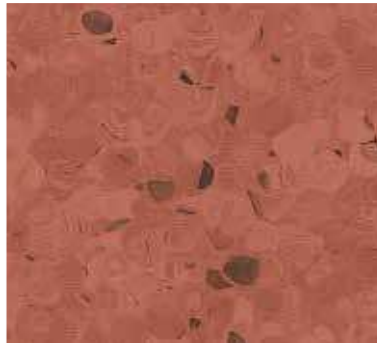
**0699 Banana**  
NCS: 0520-Y20R / LRV: 64.3



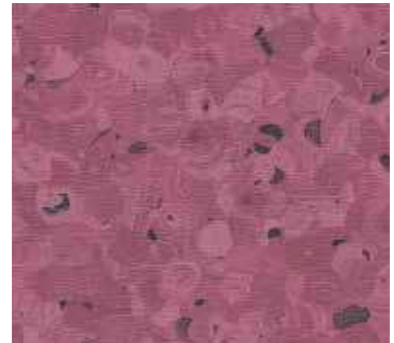
**0327 Pear**  
NCS: 1015-Y30R / LRV: 55.0



**0326 Jojoba**  
NCS: 5020-G70Y / LRV: 18.9



**0330 Litchi**  
NCS: 4030-Y80R / LRV: 17.5



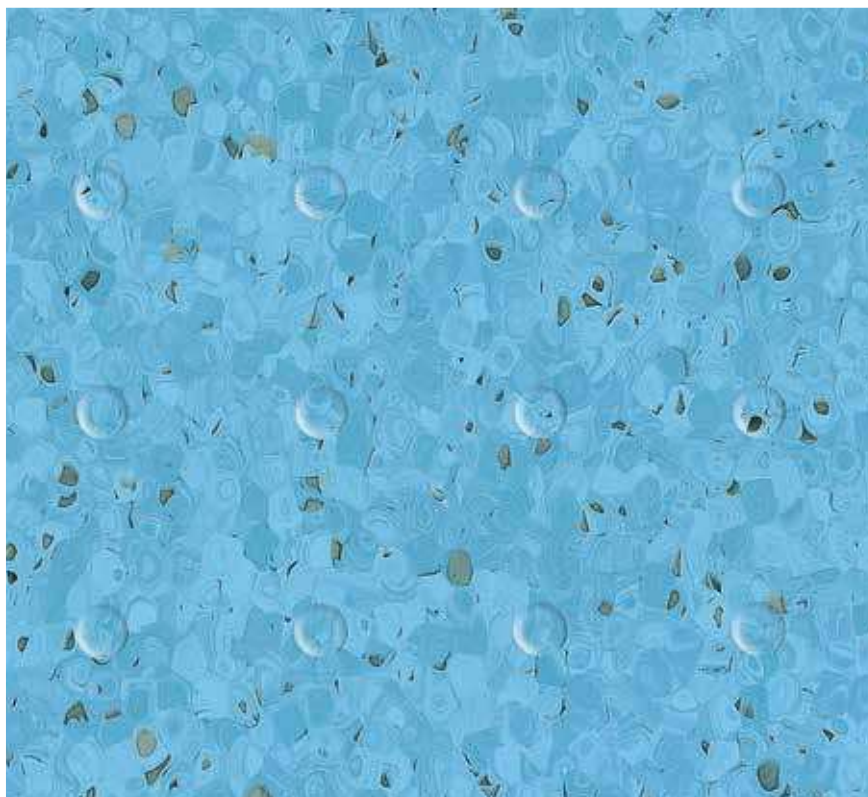
**0331 Plum**  
NCS: 4040-R10B / LRV: 15.0



# ELEGANCE SD



## Flooring for Shower System



**0341 Bilberry**

NCS: 2040-B10G / LRV: 34.8



**0705 Patisson**

NCS: 1502-Y / LRV: 64.4



**0322 Jicama**

NCS: 1505-Y20R / LRV: 67.8



**0704 Raspberry Grey**

NCS: 5005-R80B / LRV: 20.3



**0338 Kiwi**

NCS: 1040-G50Y / LRV: 47.9



**0329 Hazelnut**

NCS: 3010-Y40R / LRV: 36.4



**0333 Ananas**

NCS: 0550-Y10R / LRV: 57.9



**0700 Melon**

NCS: 1040-Y30R / LRV: 48.2



All products available as Compact sheet (suitable for shower system)



# ELEGANCE SD

The bathroom is coordinated to the room with 8 anti-slip references complying with bare foot standard.

Elegance SD consists of a 2.4 mm (on grain side) monolayer sheet with the design through the whole thickness and a specific embossing for use with bare foot (DIN 51 097 - Class A).



0341 Bilberry



0705 Patisson



0322 Jicama



0704 Raspberry Grey



0338 Kiwi



0329 Hazelnut



0333 Ananas



0700 Melon

## SHOWER SYSTEM

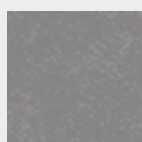
Floor / Wall & Accessories system for bathroom.

Possibility to combine with Mural Calypso wall covering to create calm, warm, Zen or light ambiances.

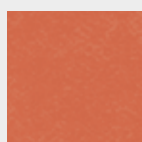
Mural Calypso wall covering range:



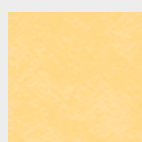
7420 Lagoon



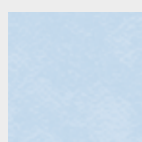
7751 Steel



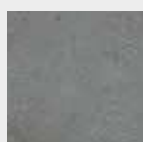
7323 Ochre



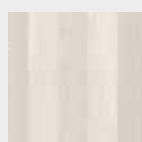
7201 Moonlight



7408 Skyline



7734 Manhattan



7744 Nordic Milk



7736 Fabric Wool

...

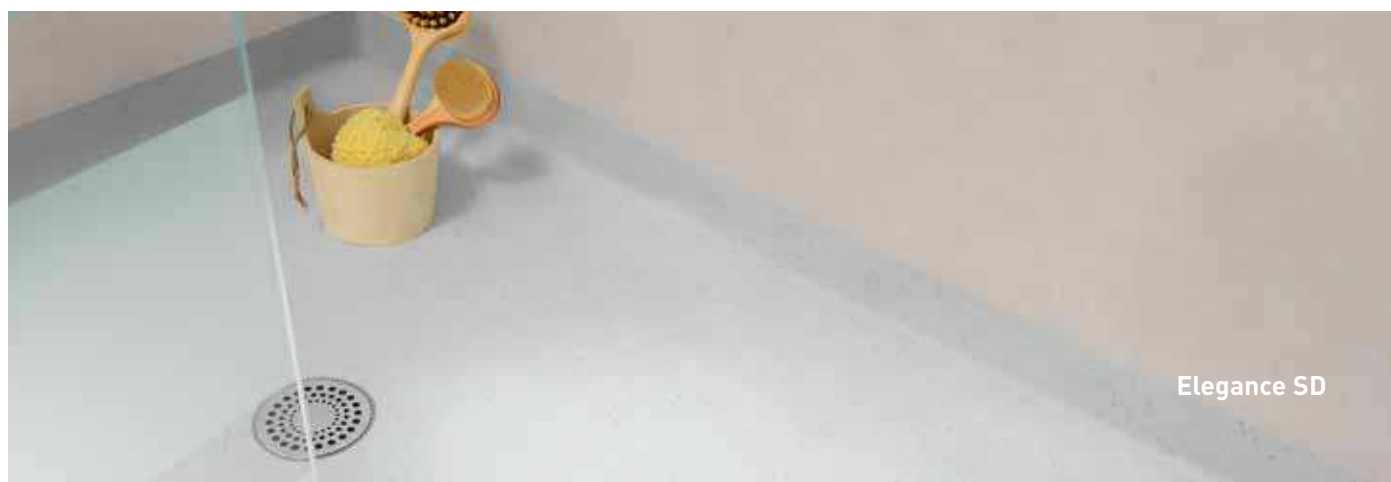


### Accessories for Taradouche Shower System

- ① Cove former for internal wall angles CA 12
- ② Perfect WR 41 wall weld
- ③ Diminishing profile Cove former
- ④ Shower threshold  
The threshold has been developed in 3 colours ● grey, ○ beige and ● blue in order to answer to the specific requirement of Alzheimer units (no contrast)
- ⑤ Drains  
PVC drain with inox grid
- ⑥ Tarafoam: acoustic insulation sub-layer



For further details, see our Taradouche Shower System brochure on [www.gerflor.com](http://www.gerflor.com)



Elegance SD

	Mipolam Elegance	Elegance SD	Mipolam Elegance EL5
--	------------------	-------------	----------------------

## DESCRIPTION

Total thickness	EN ISO 24346 (EN 428)	mm	2.00	2.40	2.00
	ASTM F386-02	inch	0.08	-	-
Thickness of wearlayer	EN ISO 24340 (EN 429)	mm	-	2.40	-
Weight	EN ISO 23997 (EN 430)	g/sq.m	2850	3100	3060
Width/length of sheet	EN ISO 24341 (EN 426)	cm/lm	200 / 20	200 / 20	200 / 20
	-	feet - inch	6'6" / 66"	-	-
Coverage / roll	-	sq.m	40	-	-
	-	sq.ft	430.56	-	-
Tile size	EN ISO 24342 (EN 427)	mm	608 x 608 <sup>(1)</sup>	-	-
Number of tiles per package	-	-	20	-	-

## CLASSIFICATION

Norm/product specification	-	-	EN ISO 10581 (EN 649)	EN ISO 10581 (EN 649)	EN ISO 10581 (EN 649)
	ASTM F 1913-04	-	compliant	-	-
European classification	EN ISO 10874 (EN 685)	class	34-43	34-43	34-43
Fire rating	EN 13501-1	class	Bfl - s1	Bfl - s1	Bfl - s1
	ASTM E648-08	class	Class I	-	-
Electrical resistance <sup>(3)</sup>	EN 1081	Ohm	-	-	10 <sup>4</sup> ≤ Rt ≤ 10 <sup>6</sup>
	IEC 61340-4-1	Ohm	-	-	≤ 10 <sup>9</sup>
	IEC 61340-4-5	Ohm	-	-	≤ 10 <sup>9</sup>
	ANSI / ESD-STM 7.1	Ohm	-	-	≤ 10 <sup>9</sup>
Static electrical propensity	EN 1815	kV	< 2	< 2	< 2
	IEC 61340-4-5	V	-	-	< 100 <sup>(4)</sup>
Protection against electrostatic discharges	ESD 20.20	-	-	-	OK
	IEC 61340-5-1	-	-	-	OK
Slip resistance wet : ramp test with oil	DIN 51130	class	-	R9	R9
Slip resistance wet : barefoot	DIN 51097	class	-	A	-
Water tightness	EN 13553	-	-	OK	-

## PERFORMANCE

Wear resistance	EN 660.2	mm <sup>3</sup>	≤ 2.0	< 4.0	< 4.0
Wear group	NF 189	group	T	P	P
Type binder content	ISO 10581	type	I	I	I
Dimensional stability	EN ISO 23999 (EN 434)	%	Sheet ≤ 0.40 - Tile ≤ 0.25	≤ 0.40	≤ 0.40
Impact sound insulation	EN ISO 717-2	dB	5	-	-
Residual indentation	EN ISO 24343-1 (EN 433)	mm	≈ 0.02	≤ 0.10	≈ 0.02
Residual indentation (measure)	-	mm	-	≈ 0.03	-
Castor chair test (type W)	ISO 4918 (EN 425)	-	OK	-	OK
Thermal conductivity	EN ISO 10456 (EN12524)	W/(m.K)	0.25	0.25	0.25
Colour fastness	EN 20 105 - B02	degree	≥ 6	≥ 6	≥ 6
Surface treatment	-	-	Evercare™	-	Evercare™
Chemical resistance	EN ISO 26987 (EN 423)	class	OK	OK	OK
Anti-bacterial activity [E. coli - S. aureus - MRSA] <sup>(2)</sup>	ISO 22196	-	> 99 % inhibits growth	-	-

## ENVIRONMENT / INDOOR AIR QUALITY

TVOC after 28 days	ISO 16000-6	µg/m <sup>3</sup>	< 10	< 10	< 10
Certification	-	-	Floorscore®	Floorscore®	Floorscore®

## CE marking

CE	EN 14041	-	
	-	-	

(1) Products available in tiles for a minimum quantity order of 500 sq.m

(2) The implementation of an effective cleaning method is the best defence against infection

(3) Measured before installation - (4) Measured with ESD shoes (ABEBA and Uvex)

Product description and technical data sheet available in various languages. See our Gerflor Country websites.

Installation and Maintenance Guidelines, Complementary ranges available on our Gerflor website.



Rubber leaves indelible stains on vinyl floorings: do not use mats with rubber backing and replace tubular furniture feet with those made of PVC or polyamide. Place mats of sufficient length at entrances to reduce outside sources of dirt.

**IMPORTANT:** The information contained in this document is valid from 01/05/2018 and is subject to change at any time without notice. In the context of constantly changing technology, our customers are responsible, prior to any use, for checking with us that this document is the version in force.

## MIPOLAM ELEGANCE, LESS SPEAKING FOR MORE ACTIONS



**Gerflor FEAG AG**  
Hädelistrasse 9  
CH - 8712 Stäfa



Tel. +41 (0) 44 922 19 20  
switzerland@gerflor.com  
www.gerflor-feag.ch